

STUNTING

GROW GREAT

is a condition that arises from prolonged under-nutrition that affects a child's physical and brain development and robs them of reaching their full potential.

IMPACTS OF STUNTING



Stunting affects a child's brain development



Stunted children are less likely to finish school



Stunted children are more likely to live in poverty as adults



Stunted mothers are more likely to have stunted children

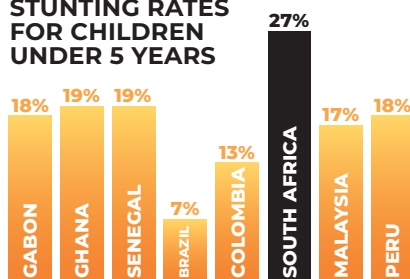


Stunted children are more likely to suffer from chronic diseases in adulthood



Stunting reduces our country's economic growth and productivity

STUNTING RATES FOR CHILDREN UNDER 5 YEARS



WHAT CAUSES STUNTING?



BEFORE PREGNANCY

- Poor nutrition in women of child-bearing age



DURING PREGNANCY

- Smoking, drugs and alcohol
- Infections
- Maternal distress
- Teenage pregnancy
- High blood pressure
- Short birth spacing



AFTER BABY IS BORN

- Maternal distress
- Introduction of solids before 6 months
- Nutrient-poor diet
- Poor gut health
- Infections

+ Poverty, inequality, poor access to water and sanitation, gender inequity and food insecurity can also increase the risks of stunting.

THE IMPACT OF STUNTING AFFECTS ALL SOUTH AFRICANS EVEN THOUGH IT IS COMPLETELY PREVENTABLE!



THE FIRST 1000 DAYS of a child's life is the time from conception to two years of age. It is an opportunity to lay the foundation for a child's academic success, health and general well-being. **However, it is also a vulnerable time for stunting. Mothers and babies need good nutritious food, high quality healthcare and access to clean, healthy environments so that they can Grow Great.**

WHO IS GROW GREAT? *Grow Great is a national campaign that aims to mobilise South Africa to achieve zero stunting by 2030 through inspiring the public, mobilising stakeholders, supporting parents and empowering practitioners. Grow Great believes in a future where no child is denied the opportunity to reach their full potential as a result of stunting and poor early childhood development in the first 1000 days of life.*

MOPANI STUNTING SCORECARD



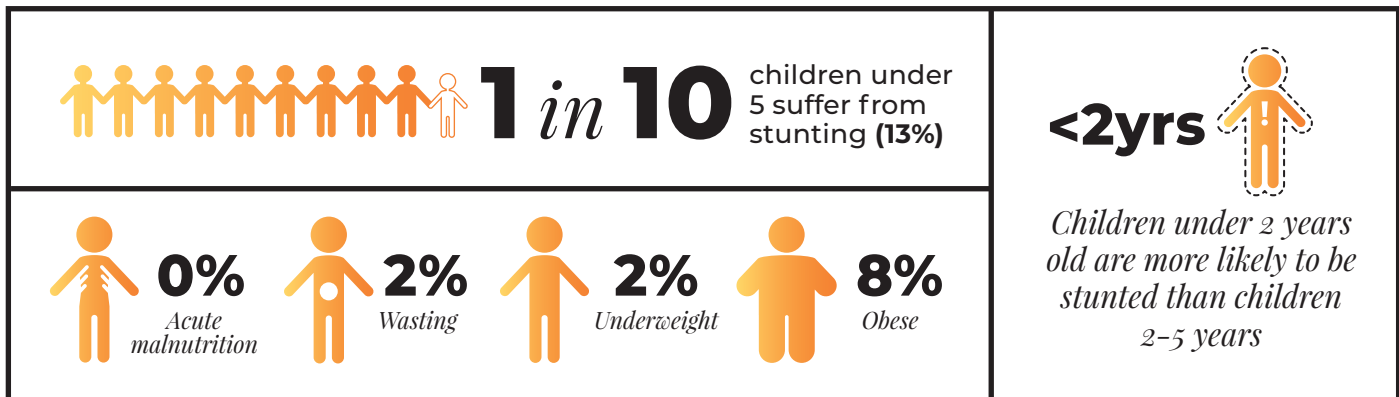
The Grow Great Community Stunting Surveys aim to empower local communities, civil society and government leaders towards data-driven action that will reduce stunting by 2030.

453 children under 5 years were surveyed between February and May 2022

LIMPOPO PROVINCE
Ba-Phalaborwa, Greater Tzaneen, Greater Giyani, Greater Letaba, Maruleng



STUNTING PREVALENCE IN MOPANI



COMMUNITY STUNTING PROFILE

